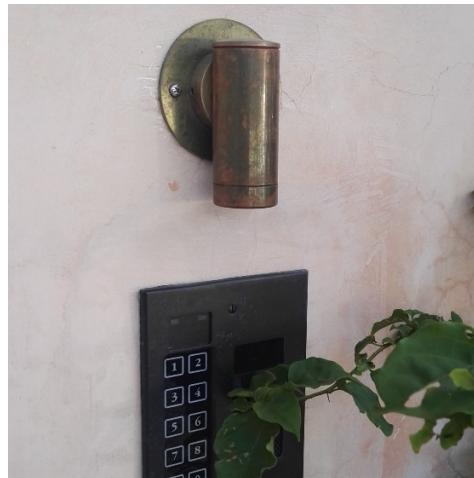


Ocean Modern Sample Case Re-Cap

All Fixtures are Solid Brass

E1 (Nickel Plated)

This fixture is a fixed downlight. Minimal 2" extension from vertical surface on 2" diameter canopy. Ideal for either FL (flood) beam or NO (no-optic) 120° beam, given typical installation on wood post 3 – 4 feet above deck. Other narrow optics can be used for higher mounting heights, or if used in upward orientation to shine up wall. To mount fixture, the cylinder and hidden arm disengage from canopy by loosening the (2) set screws on side of canopy. Canopy is then mounted directly to wood using SS sheet metal screws normally shipped with fixture. Splicing is often either within hollow post (if vinyl or metal), or at the base of a wooden post using a wooden raceway on the back or side to conceal the wire. Custom larger back plate available for existing recessed j-box.



E8 (Weathered Brass)

This fixture is an all-purpose directional with minimal footprint. Ideal for trellises, gazebos, rooftop gardens or limited space planting areas. Available in 2 watt amber, 3 or 4 watt 2700K or 3000K, with spot, narrow flood, flood and no-optic 120° beams. Fixture can be specified with angled or full-cutoff glare shield, honeycomb louver, and / or other optical accessories. Ground mounted on ground spike with riser option (E8-S fixture), as well as tree or trellis mounted.



A separate, loose, cylinder with angled glare shield is also included for this fixture. When the fixture is shipped with the angled glare shield, it is in line with the axis of the knuckle. However the accompanying cylinder illustrates how the glare shield can be field-rotated by loosening the (2) side set screws.

MB1 (Dark Bronze)

Similar to a bollard in design, but features a ½" male thread on the bottom, making it install more like a pathlight. 180 degree illumination. 360 deg. is do-able, but not promoted due to needed change in reflector and special machining. We recommend at minimum a GS2BC, but more ideally our JB to be concreted in place. The fixture's top head can be rotated 360 and locked in place using a set screw hidden on opposite side of the louvers. While standard height will be just under 17", we will have a minimum 10" height and 26" on the overall height. This fixture will also be available in 120V and 230V, using a small, integral 4 watt magnetic transformer.



- E3-R** Round, open aperture (nickel)
- E3-RL** Round, louvered (dark bronze)
- E3-SQ** Square, open aperture (unfinished brass)
- E3-SQL** Square, louvered (weathered brass)

The E3 is a recessed series with minimal fixture footprint, in either 2 1/8" diameter or 2 1/8" square, for steplighting or uplighting applications. It uses our 2 watt amber or 3 watt warm white LED modules with (4) available beams. The E3-M, which is not included in sample case, is also available as a marker light with (4) separate sector configurations and minimal 2 1/8" diameter. This series has no visible fasteners, and relies on a friction fit with a PVC sleeve, allowing rotation of the faceplate in the field. It can be mounted in wood using the DM deck mount ring, which affixes to the PVC sleeve and to either the back of a wood wall or underside of a wood deck. PVC is just under 2", allowing contractor to use 2" hole saw. Fixture can also be poured in a concrete wall, using our Concrete Form Kit (CFK). The fixture housing can also be set in to a 2" core-drill for existing concrete.

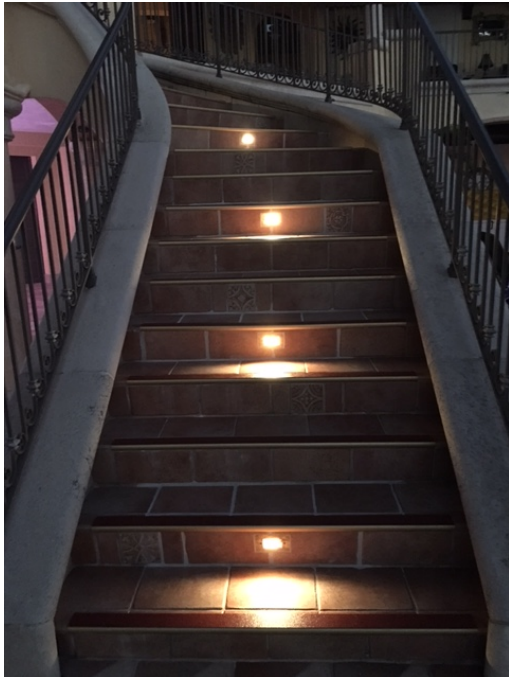




STL (Dark Bronze)

This new steplight fixture has two main features:

- 1) Direct 120V input and 2) Standard screw spacing, allowing contractors to utilize a standard single gang box which can be purchased locally prior to a concrete pour. We do offer a back box (SGBX-SS) as an accessory, which is stainless steel, and is included in the sample case. The fixture also features no-glare louvers with a wide throw of light. The faceplate is solid brass, with stainless steel tamper resistant flat head allen screws. The LED light engine consumes 2.5 watts at a 3000K color temperature, and fully dimmable using standard triac dimming.



E8-H-2x4.5 (Dark Bronze)

The E8-H-2x4.5 is an ambiance-creating, hanging fixture that is mounted to either a tree branch or trellis. Using a 2 watt, 3000K omnidirectional lamp, light exits both the side perforations and open area at bottom, allowing additional downlight. The fixture is also available in a longer 9" cylinder length (E8-H-2x9). It can be hung directly from the fixture's top loop using a hook, such as in a trellis application, or use the standard 20" stainless steel cable with ½" male thread at the other end to hook in to a small canopy for splicing.



L-011-P (Unfinished Brass)

The L-011-P is our pattern projector with two main selling points: Size & Durability. At just 8" or so long, the fixture is much smaller than most projectors. Being constructed from solid brass, the fixture can be indoors or outdoors, and of course right by the ocean. It uses a removable "gobo" pattern, for which there are many configurations. A link on our product page entitled "Other Patterns" will take customer to the gobo manufacturer's site, which can then be searched by category for a particular pattern. The 12V version can also be hung from a tree or catenary cable. The L-011-P is also available in direct 120V, and even metal halide for higher ambient light levels. It is a great way to personalize a project.



Z1 (Dark Bronze)

The Z1 is a contemporary pathlight that uses a flatter shade design than previous Beachside pathlights, without a top finial, and small 5" overall diameter. A reflector positioned up within the shade brings the light down. The frosted glass adjacent to the reflector helps diffuse the light, but the bottom clear portion of the glass allows viewing "through" the glass, cutting glare to almost nothing. It is available in 2 watt amber, 3 watt or 4 watt 2700K or 3000K.

